

## Float Tank



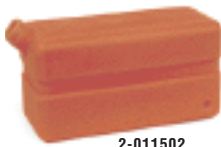
- 3.5 gallon capacity
- 22" x 13-1/2" x 5"
- Heavy 3/16" durable plastic
- Convenient mounting tabs
- Complete assemblies available, call with model number

Part No.	Description
2-01164	Universal Plastic Float Tank
95-07121207	Lid & Hinges

## Fuel Tanks



2-011501



2-011502

- International Color coded for gas (red) and diesel (Green)
- Rugged fill neck cap with vent
- Semi transparent shows fuel level
- Heavy-duty 14 gauge

Part No.	Description
2-011501	10 gal Poly, Yellow, Skids
2-011502	5 gal Poly, Red, Skids
2-011503	10 gal Poly, Red, SGHW
2-01154	6 gal Poly, Yellow, VHW/MVP/MVC
2-011541	6 gal Poly, Red, MPG

NOTE: Cap not included with tank

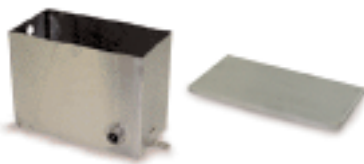
## Molded Plastic Float Tanks



- Molded polypropylene
- 7 liter size: 13" x 5" x 6"
- 1 gallon size: 10" x 5" x 8"
- No holes for max flexibility
- 1 gallon tank has tight-fitting lid, included
- 7 liter tank lid is snap-on & sold separately

Part No.	Description
343002	7-Liter Tank Only
343003	7-Liter Tank Lid
343004P	1-Gallon Tank w/ Lid

## Stainless Steel Float Tank



- Fully welded and water tight
- 2.8 gallon capacity
- 12" x 9" x 6"
- 16 gauge #303 stainless steel
- 1/2" full coupling (SS) inlet/outlet
- Convenient mounting tabs

Part No.	Description
343006	Stainless Steel Float Tank
343016	Stainless Steel Lid

## Fuel / Chemical Tanks

Suitable for primary or auxiliary fuel tank or for onboard chemical holding tank.



344732



344734

- Molded seamless tanks
- 2-1/4" filler neck
- Heavy-duty polyethylene complete with mounting tabs
- Suitable for gasoline, diesel fuel alkaline or acidic chemical (Not for use with solvents)
- Versatile - no pre-drilled suction/return ports

Part No.	Description	Height	Depth	Length
344732	8 Gal w/tabs	9-3/4"	12"	15-3/4"
344734	8 Gal w/tabs	10-3/4"	10"	21-1/2"
344728	Vented Cap, 2-1/4" Thread			

NOTE: Cap not included with tank

## Plastic Fuel Tank



- 9 gallon black plastic tank
- 4" fuel neck
- 19-5/8" L x 12" W x 10" H
- Two 1/4" FPT ports in bottom

Part No.	Description
344727	9 Gallon Fuel Tank
344728	Plastic Fuel Cap, 2-1/4" Thread

NOTE: Cap not included with tank

## Fuel Tanks



091502



091504



091505



091506

- Seamless one-piece construction of marine grade, UV-protected polyethylene
- Built-in reserve (When gauge reads Empty, tilt to access additional fuel!)
- Rugged fill neck cap with vent
- 90° fuel withdrawal fitting
- Easy-to-read sight gauge
- 4 shapes & capacities from which to choose

Part No.	Landa No.	Gallons	Height	Length	Width
091502*	2-01152	6.0	10.5"	21.50"	13.50"
091504		8.5	10.0"	20.25"	14.25"
091505		11.5	14.0"	20.25"	14.25"
091506		12.0	11.5"	18.50"	24.75"

\*Built-in Carrying Handle

# CHASSIS COMPONENTS

## 9 Gallon Fuel Tank



- 9 gallon black plastic tank
- Strap or Bolt mount (4/5/16" inserts in bottom)
- Metal inset 3/8" inlet/return lines
- Black - Crosslinked PE
- Vented fuel cap
- Filler neck doesn't extend beyond tank wall
- Compact Size: 19-3/4" L x 12" W x 10-1/2" H

Part No.	Description
<b>344735</b>	9 Gallon Fuel Tank

NOTE: Includes fuel cap

## Battery Boxes w/ Cover, Marine Style

Protect batteries on pressure washers, boats or other industrial equipment.



- Attractive molded polypropylene
- Complete with hold-down cleats and strap for cover

Small:  
L: 8-1/2" W: 6" H: 8-1/2"  
Large: L: 11-1/4"  
W: 7-3/4" H: 10-3/4"

Part No.	Description
<b>306625</b>	Small Box
<b>306627</b>	Large Box

## Fuel Caps



2-01167



2-01153



2-01157, 2-01158



Part No.	Description
<b>2-01167</b>	Threaded Cap (Fits All Poly Fuel Tanks)
<b>2-01157</b>	Cap, 14" w/ Fuel Gauge, PHW & PGHW Metal Tanks
<b>2-01158</b>	Cap, 18" w/ Fuel Gauge, SGHW Metal Tanks
<b>2-01153</b>	Cap, Plastic, Twist Lock, PHW Metal Tanks

## Chrome Fuel Caps



- For gas or diesel fuel tanks
- Fits standard 2-1/4" fuel necks

Part No.	Description
<b>344725</b>	Chrome Cap

## Complete Wheels



4-0304



4-0303



4-0307



4-0305

- Replacement for all LANDA machines
- High quality pneumatic, and semi pneumatic
- Fits 5/8" shaft, except 4-0305 fits 1/2" shaft

Part No.	Description
<b>4-0304</b>	10" Mag
<b>4-0303</b>	10" Steel Rim w/ Tube
<b>4-0307</b>	13" Steel Rim
<b>4-0305</b>	8" x 1.75", Semi-Pneumatic

## Tubes & Bearings



4-03031



4-03910



076504P

- Replacement for standard LANDA machines

Part No.	Landa P/N	Description
<b>4-03031</b>		10" Inner Tube
<b>4-03172</b>		12" Inner Tube
<b>4-03162</b>		13" Inner Tube
<b>076504</b>	4-03910	5/8" Wheel Bearing
<b>076505</b>		3/4" Bore Bearing
<b>076504P</b>		5/8" Nylon Bearing
<b>076505P</b>		3/4" Nylon Bearing

## Caster Wheels



4-031509



4-031513



4-031514

- Easy pivot of machines
- Locking or non-locking
- 360 degree swivel

Part No.	Description
<b>4-031509</b>	3" Grey, WaterJet
<b>4-031513</b>	5" Swivel Caster, SJ Units
<b>4-031514</b>	5" Swivel Caster, w/ Brake, SJ Units

## Rubber Parts



2-0103



2-01041



2-0108



2-0107



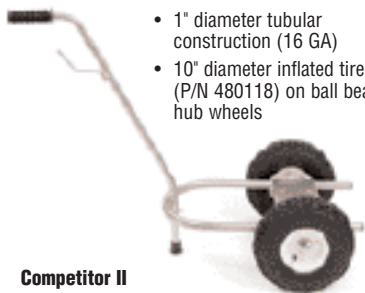
2-01101



2-01011

Part No.	Description
<b>2-0103</b>	1/8" Grommet (Holds Nozzles in Frame)
<b>2-01041</b>	Foot Pad, Soft, PG
<b>2-0107</b>	Bellows, Leg (Boot), PG
<b>2-0108</b>	Bumper Pad, Engine, PG
<b>2-01101</b>	Handle Grip, 1" Waffle
<b>2-01011</b>	Vibration Isolator, 5/16"

## The Competitor I & II



- 1" diameter tubular construction (16 GA)
- 10" diameter inflated tires (P/N 480118) on ball bearing hub wheels
- 5/8" solid axle
- Detachable, single-shaft handle
- Comfortable rubber handle grip
- Quick and easy assembly

### Competitor I

- Base plate for 56C frame motors or up to 5.5 HP gas engine
- Weight 22 lbs

### Frames Only

- Competitor I or II styles
- Complete EXCEPT for wheels
- Add your own wheels; IMPROVED design allows use of 8" or 10" wheels (all 5/8" axles)

### Competitor II

- Base plate for up to 184 frame electric motor or up to 13 HP Honda gas engine
- Weight 24 lbs

Part No.	Description
480009X	Competitor I
480012X	Competitor II

## Black Max Machine Frames



Black Max II Mobile Frame w/ Hose Rack

**Max I** – 12" x 22" Base Plate. Excellent for 56C & 145TC Frame Motors and 5.5 HP Gasoline Engine Units

**Max II** – 12" x 28" Base Plate. 145TC & 184TC Frame Electric Motors and 7-16 HP Honda & Briggs & Stratton Engine Units

- 7/8" tubular steel handles (bright zinc)
- Four grommets in base for nozzles
- 1-1/2" turn down lip adds rigidity
- Direct drive mounting options for gas or electric
- Choice of black painted steel or stainless steel base plates; mobile units have choice of with or without hose racks
- All assembly hardware included

Part No.	Description
<b>Black Max I</b> – 12" x 22" Base Plate – Black	
480010X	Stationary Frame
480014X	Mobile Frame w/o Hose Rack
480014XH	Mobile Frame w/ Hose Rack
<b>Black Max II</b> – 12" x 28" Base Plate – Black	
480020X	Stationary Frame
480024X	Mobile Frame w/o Hose Rack
480024XH	Mobile Frame w/ Hose Rack
<b>Silver Max II</b> – 12" x 28" Base Plate – Stainless Steel	
480030X	Stationary Frame – SS Base
480034X	Mobile Frame – SS Base w/ Hose Rack
480035X	Mobile Frame – SS Base w/o Hose Rack

NOTE: Both frame bases are slotted to accept 56C, 145TC, 182/184TC electric motors and 4-13 HP Honda, 3-11 HP Briggs Engines. The Max II has additional slots to mount 213/215TC Motors and 16-18 HP (Vanguard) Briggs Engines. (Length of Max I base may not allow some 3 & 5 HP Motor Pump Configurations.) Inflated tires are P/N 480134.

## Hand Tote II

Strong. Lightweight. Versatile.



- Strong 1" square steel tubing
- Lightweight – only 8 pounds!
- Rubber mounting feet for stability
- Use with either gas or electric direct drive units
- Compact size – 12" W x 19" H x 17" D
- Durable gloss black polyurethane finish

**Electric:** 1.5 HP - 5.0 HP 56C Motor

**Gas Eng:**  
4.0 HP - 6.5 HP Honda  
3.0 HP - 6.0 HP B&S /  
B&S Vanguard engines

Part No.	Description
565230X	Hand Tote II

## Frame Components & Accessories

Part No.	Description
349004T	Motor Mount
565102C	12" x 22" Black Base (Black Max I)
565104C	12" x 28" Black Base (Black Max II)
010014T	12" x 28" SS Base (Silver Max II)
565142X	Long Handle (Mobile versions of Black Max I & II)
010008T	Short Handle (Req's 2 on Stationary, 1 on Mobile Black Max I & II & Silver Max)
010007T	Long Handle w/ Hose Rack (Black Max I & II, & Silver Max II)
565115	Stationary Foot Bracket (Stationary Black Max I & II, & Silver Max II)
565112	Axle Saddle Stiffener (Black Max II)
565125	Battery Tray
565132	Axle – 3/4" x 18" (Standard axle length on Black Max I & II and Silver Max II)
565133	Axle – 3/4" x 23" (Long axle length on Black Max I & II and Silver Max II with 2-cylinder engines)
070647	Tubing Plug Black (1" 16 Gauge used to plug open round tubing ends on Competitor I & II)
349901	Foot Pad w/ Washer (1-1/2" x 3/4" Used as anti-skid "foot" on Stationary & Mobile Black Max I & II, Stationary Silver Max II)
349902	2-1/2" Foot Pad w/ 3/8 stud (Silver Max II)
071627	Chrome Hub Cap w/ Ret 5/8" Axle (Competitor I & II)
071625	Chrome Hub Cap w/Ret 3/4" Axle (Black Max I & II, Silver Max II, ITB)
349917	Grommet for QC Plug w/ Nozzle (All Black Max, All Silver Max)
387123	Cushioned Hand Grip (7/8" ID, used with Competitor II)
387124	"Softie" Hand Grip (7/8" ID, used with Competitor I)
071460	Nylon Spacer Bushing (3/4" ID, used w/ Black Max I & II, Silver Max II)
565329	V-foot (Black Max I & II Mobile; does not include Foot Pad #349913)